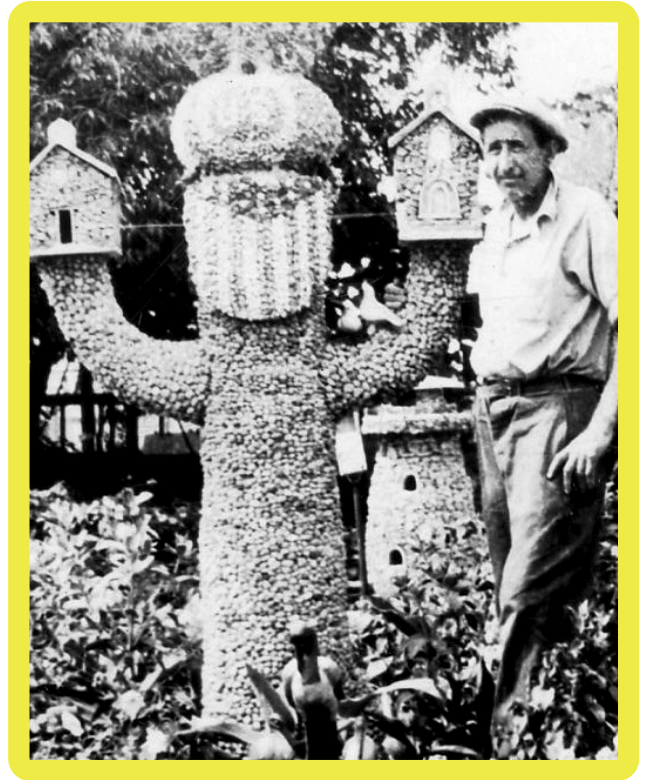


KIDS TOUR



HISTORY OF THE HARTMAN ROCK GARDEN

The Hartman Rock Garden is a Visionary Art Environment. What does this mean? To switch around the words, it is an art environment created by a visionary artist. The artist was Ben Hartman. Between 1932 and 1944, Ben built this fascinating world out of concrete, stone, metal, and whatever else he could find. Ben was a self-taught artist outside of the established art world. This is why this type of art is sometimes called Outsider Art.

Ben Hartman's real name was Harry George Hartman. It is said that people called him Ben because he had always just "been" fishing. Ben was born in 1882 in Pennsylvania. At the age of 16 he left home to train to work as a molder. Ben moved to Springfield, Ohio in 1913. Here he worked as a molder at the Springfield Machine Tool Company factory. At work, he poured hot liquid metal into molds. Once hardened, other workers used these objects to produce tools.

Ben and his wife Mary had three children: Ruth, Martha, and Benjamin. The family lived in a small house in a mostly rural area just outside of Springfield, just blocks from the factory. Ben and Mary loved of gardening and even built two greenhouses to hold their many varieties of flowers and vegetables. In the shed behind the house, they also raised pigeons, chickens and rabbits.

In 1932, during the Great Depression, Ben lost his job at the factory. To keep himself busy, he began constructing a cement fishing pond in his backyard. By the time he had finished the project, Ben was "hooked". He began constructing many more structures and figures, following

HISTORY (CONTINUED)

the themes of history, religion, and patriotism. He used his skills as a molder in the creation of his art. However, instead of liquid metal, he used concrete. Over the next decade, Ben filled his yard with over fifty structures, many types of plants, and countless handmade figurines. Using hundreds of thousands of stones and several tons of concrete, Ben had created a very unusual garden.

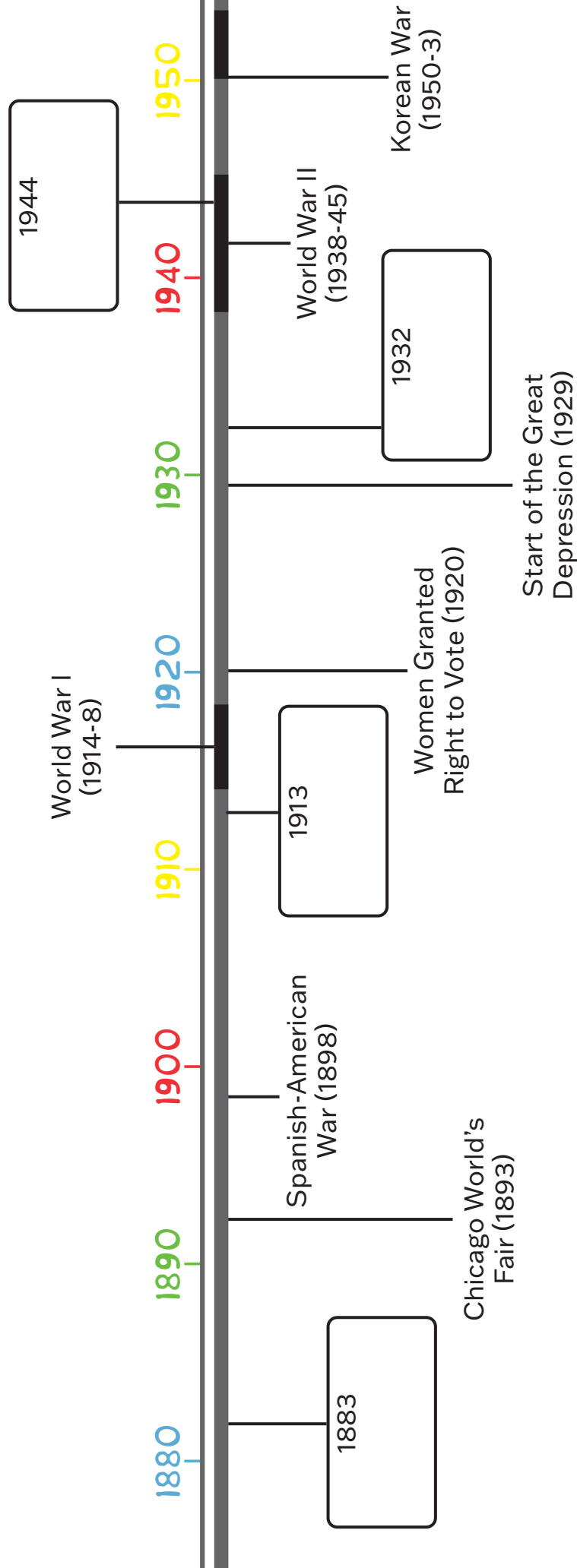
In 1944, Ben died from lung disease. For the next 53 years, Mary cared for her husband's remarkable creation (and added small details where she saw fit). She called it her "garden of love." After her death in 1997, the garden began to fall apart. In 2008, the Kohler Foundation, known for its involvement in the conservation of outsider art environments across the country, purchased and restored Ben and Mary's unusual masterpiece. In 2009, Kohler gave the garden to the Friends of the Hartman Rock Garden. The Hartman Rock Garden is now open to the public 365 days a year and welcomes visitors from all around the world (as well as children from just around the corner)!



Ben Hartman and his daughter Martha building the Cherub Gateway, circa 1938.

HARTMAN TIMELINE

A timeline is a great way to record events in history. Use the timeline below to examine how Ben Hartman's life and art relate to other events in history. Read the history on the previous pages. Using the boxes provided, note key events on the timeline. Several major events in American history have already been provided.



VOCABULARY WORD FIND

Below is a list of words that are important to know when exploring the Hartman Rock Garden. Can you find all of them in the puzzle below? (Hint: two words are diagonal)

ABSTRACT: when the appearance of something has been simplified or changed

ART ENVIRONMENT: a unique, personal place, containing art by a self-taught artist

COMPOSITION: the arrangement of objects in a work of art

CONSERVATION: the careful preservation and protection of something

HISTORICAL: based on, or relating to, history

MOLD: a form used to produce a certain shape

MOLDER: someone who works with molds to produce objects

MOSAIC: a design created by imbedding stone or pieces of glass on a surface

OUTSIDER ART: art created by an artist who is outside the traditional art world

PATRIOTISM: love of one's own country

REALISTIC: art that attempts to resemble how things look in real life

SYMBOL: an object that represents something else

TECHNIQUE: a way of doing something

VISIONARY: having great imagination

X M H B V I S I O N A R Y P W R B S M U Z T G C J V X Z C P
O Z W O B C V F A E Y W N K R C H M Z Y E O P C L T G T O L
H W O Y U V S I L P B G T C K G N C R E A L I S T I C E N C
U I T A R T E N V I R O N M E N T Y M O L D G O O E Q C S O
V M S B H C S O D Z D N S W H U L N U K N A C J Q T N H E M
Q H W T I P Y I M E K O Y Y M K N Z D J A O G Y Y C P N R P
A M Y V O C D I D X Y T M K N O Y I I Z K P P Y W S M I V O
Q S B C P R D I Y E V R B V V B F U U L U L L S R V V Q A S
F Y A N H M I O Y T R Q O L P A T R I O T I S M J V K U T I
X H F L I D F C H J Y A L D L K Q X Z P H G B U W W W E I T
N V W R C Y D P A P C G R B M U G N S O Q N J R Z Q A C O I
Q M O S A I C Q A L R O X T S N E Z Z A R M W T X I Q O N O
K C A B S T R A C T B P K L S R O M W U T K G F K H V W K N
D P K C Z M Q C B D Q Q G R M A B X K U F J L D D H E O D J
I G X E T X Y Q G D M M N N M O L D E R D P W J I B V O D S